



City of Ann Arbor Composting  
Facility

4170 Platt Road, Ann Arbor  
Michigan 48107

Site Phone 734-474-7286

Hours of operation

Monday – Friday 7am to 4pm

Saturdays Apr-May-June: 7am to 11am

### Products and Pricing

	Retail		Wholesale			
WeCare Compost	\$18.00	/yd	\$12.00	>100 yds	\$8.00	>500 yds
Natural Wood Mulch	\$12.00	/yd	\$7.00	>100 yds	\$5.00	>500 yds
Wood Chips	\$5.00	/yd	\$5.00	>100 yds	\$5.00	>500 yds



WeCare Denali, LLC serves as the contract operator for City of Ann Arbor’s Compost Facility. WeCare Denali, LLC is the exclusive distributor of WeCare Compost, Mulch, & Soil. WeCare Compost is Proudly Enrolled and Certified by the US Composting Council Seal of Testing Assurance Program (STA).



### PRODUCT PURCHASING DIRECTIONS

Please enter facility from Platt Rd Entrance. Drive onto inbound truck scale to Kiosk. Follow directions on Kiosk (M – F an attendant is available to answer any questions using the call button). Select the material you’re purchasing from the drop-down menu and hit enter. Receive inbound scale ticket. Proceed ¼ mile and take first left into the compost site where Denali staff will process your transaction and load your vehicle. NO CASH TRANSACTIONS. Sales from the facility are per cubic yard and loaded via CAT 938H front-end loader. Contact our office to inquire about our 30-Day Company Invoicing.

Ann Arbor residents may pick up one free cubic yard of compost and/or mulch per household. This program runs on Saturdays only, from the week of April 15th until the week of July 4th. To partake in the City of Ann Arbor’s Give Away Program, a valid City of Ann Arbor driver's license or a recent water bill is required. Again, the limit is 1 cubic yard of compost and/or mulch per household. Driver’s license will be read by scanner at inbound scale kiosk. Please note that this is a self-loading program, therefore each resident that partakes must bring their own shovel and containers that they may need for loading.

### DROP-OFF DIRECTIONS

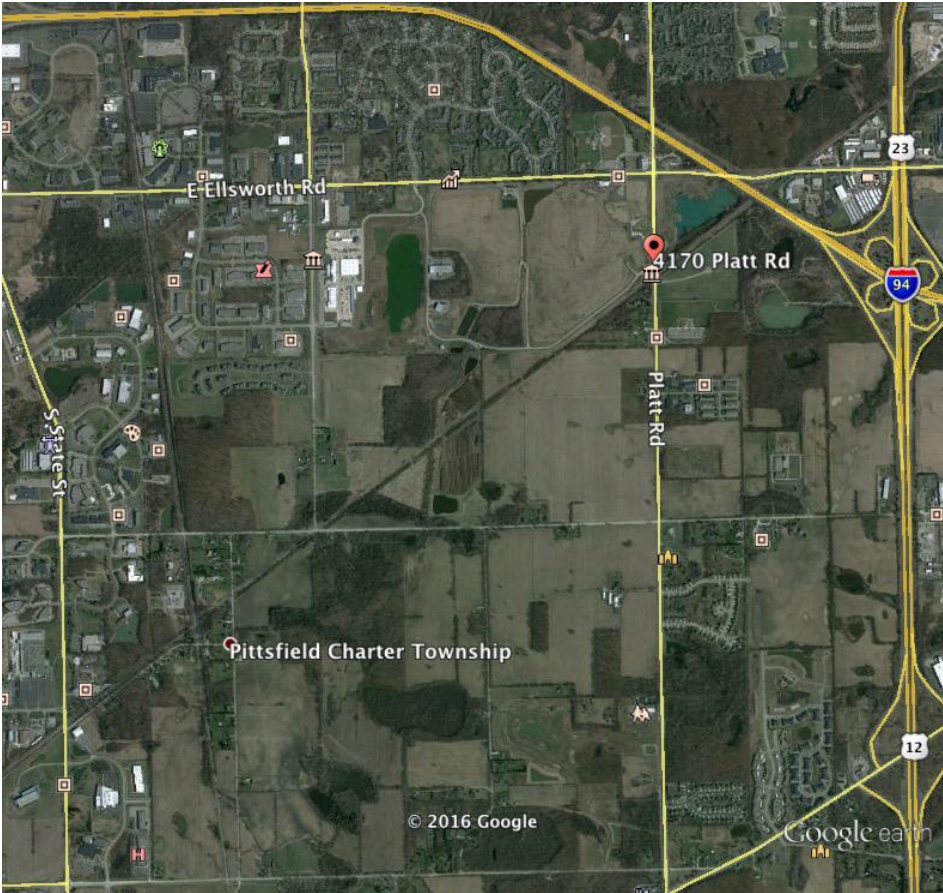
Please enter facility from Platt Rd Entrance. Drive onto inbound truck scale to Kiosk. Follow directions on Kiosk (M – F an attendant is available to answer any questions using the call button). Select the material you’re dropping off from the drop-down menu and hit enter. Receive inbound scale ticket. Proceed ¼ mile and take first left into the compost site where Denali staff will process your transaction and direct you to the unloading area. NO CASH TRANSACTIONS. Contact our office to inquire about our 30-Day Company Invoicing.

### DROP-OFF PRICING (Pricing is per cubic yard)

- Mixed Yard Waste/Leaves/Brush/Pallets (NO PLYWOOD/OSB): \$15/cu.yd.
- Wood Chips – Must be clean \$15/cu.yd.

\*For quantities less than 1 cubic yard, Denali will charge \$1.00 per bag, unless the total amount of bags exceeds 1 cubic yard. Then Denali will revert to the cubic yard pricing. Ann Arbor residents may deliver acceptable yard waste materials, at no charge, to the City of Ann Arbor Compost Center located at 4170 Platt Road Monday thru Friday, from 8 a.m. till 4 p.m. In order to drop off yard waste, a valid City of Ann Arbor driver's license or a recent water bill is required. The yard waste limit is 1 cubic yard per household. Residents must visit the scale before and after dropping off yard waste in order to verify material weights. The scale house is located at the Platt Road entrance. City landlords, owners of multiple single-family properties and businesses are not eligible for this program.

# WeCare Denali



Google earth



**Location:**

**The WeCare Denali Composting Operations is located at the Wheeler Service Center, Located at 4170 Platt Rd, Ann Arbor, just south of Ellsworth Rd.**